

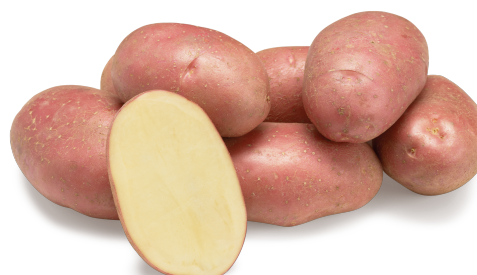
Evolution.



Traditional

A second early ware potato variety with an attractive dark red skin and early a good yield.

- ▶ **Large tubers**
- ▶ **Good drought tolerance**
- ▶ **Multiple potato cyst nematodes resistances**



characteristics

General characteristics

Breeder: Agrico Research B.V.

Crossing: AR 94-0807 x AMOROSA

Breedersright: 31-12-2042

Seedling: AR 99-0522

Plant and tuber characteristics

Maturity: second early / 6,5

Light sprout colour: green red / GR

Flower colour: light purple / LP

Number of berries: above average / 5

Foliage - initial development: quite fast / 7,5

Foliage - final development: good / 8

Foliage - firmness: average / 6,5

Skin colour: red / R

Flesh colour: light yellow / 6

Skin finish: good / 7

Tuber shape: oval long / OL

Regularity of tuber shape: quite regular / 6

Tuberisation: quite high / 7

Tuber size: large / 8

Regularity of size: quite regular / 6,5

Dormancy: short / 4

Sensitivity and quality

Secondary growth: quite sensitive / 6

Black spot (internal bruising): slightly sensitive / 7

Growth cracks: quite sensitive / 6

Harvest damage: slightly sensitive / 7

Metribuzin - pre-emergence: slightly sensitive / 7

Metribuzin - post-emergence: slightly sensitive / 7,5

Bentazon: slightly sensitive / 7

Ethylene: 5% to 15% more tubers / 6

Underwater weight: 343

Dry matter content: 18,9%

Cooking type: rather floury / B

Discolouration (after cooking): quite sensitive / 6

Raw discolouration: - / -

Fries quality: unsuitable / 4,5

Dry matter distribution: - / -

Crisping quality: unsuitable / 4

TGA-level: 8

How to grow



www.agricopotatoes.com

Fertilization ¹

Nitrogen: standard advice - 10%.

Phosphate: standard advice.

Potassium: standard advice.

Seed treatment

Can be planted directly out of the cold store, preferably after a short heat shock. Desprouting more than once can have a negative impact on yield and size regularity.

Planting distance

28/35 mm: 25 cm (54.000 plants/ha)

35/55 mm: 30 cm (45.000 plants/ha)

Weeds

A standard use of metribuzin (Sencor), before or after emerge, can give some foliage reaction, but rarely any yield reduction.

Fungicides

A strict preventive spraying schedule against late blight is necessary.

Harvest

Due to its sensitivity scores for black spot and/or harvest damage, wait at least two weeks after haulm killing before harvest.

Storage - .

Preferred storage temperature is 5 °C. Suitable for delivery straight from the field or short term storage.

¹ Level of fertilization is based on soil analysis.



Resistances

Virus - Leaf roll: - / -

Virus - Yn: susceptible / 5,5

Virus - Yntn (tuber): slightly susceptible / 7

Spraing: susceptible / 5

Late blight - foliage: very susceptible / 4

Late blight - tuber: slightly susceptible / 6

Fusarium: slightly susceptible / 6

Common scab: slightly susceptible / 6

Say potato,
say **Agrico.**

Powdery scab: slightly susceptible / 6,5

Black dot: slightly susceptible / 6

Wart disease F1: moderately susceptible / 8

Wart disease F6: resistant / 10

Wart disease F18: - / -

Golden nematode Ro 1/4: resistant / 9

Golden nematode Ro 2/3: moderately susceptible / 6

White nematode Pa 2: field resistant / 7

White nematode Pa 3: moderately susceptible / 5